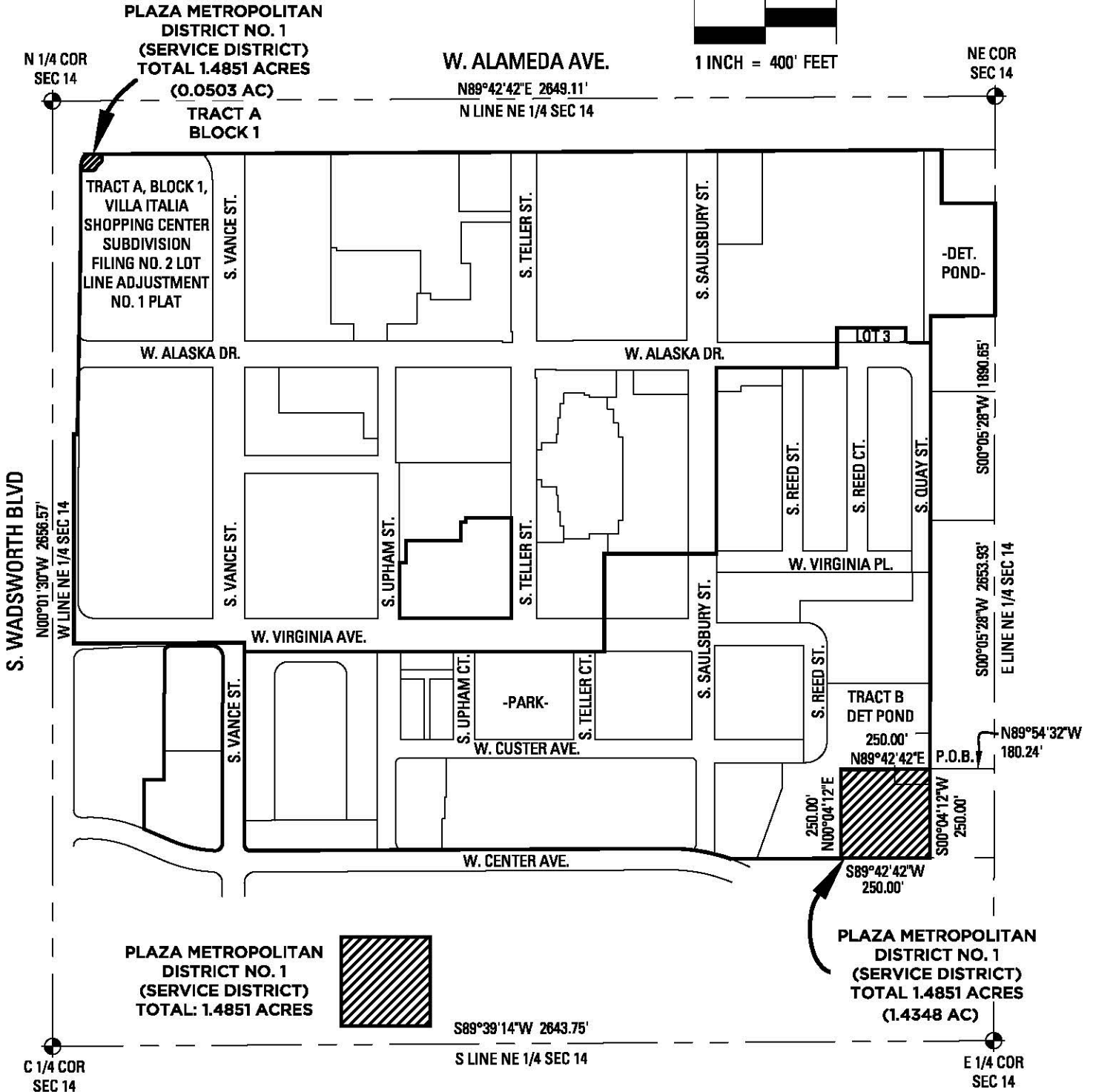
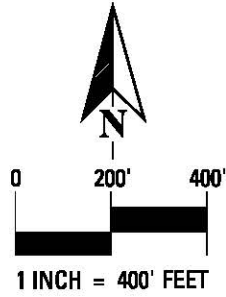


EXHIBIT SHEET 2 OF 2

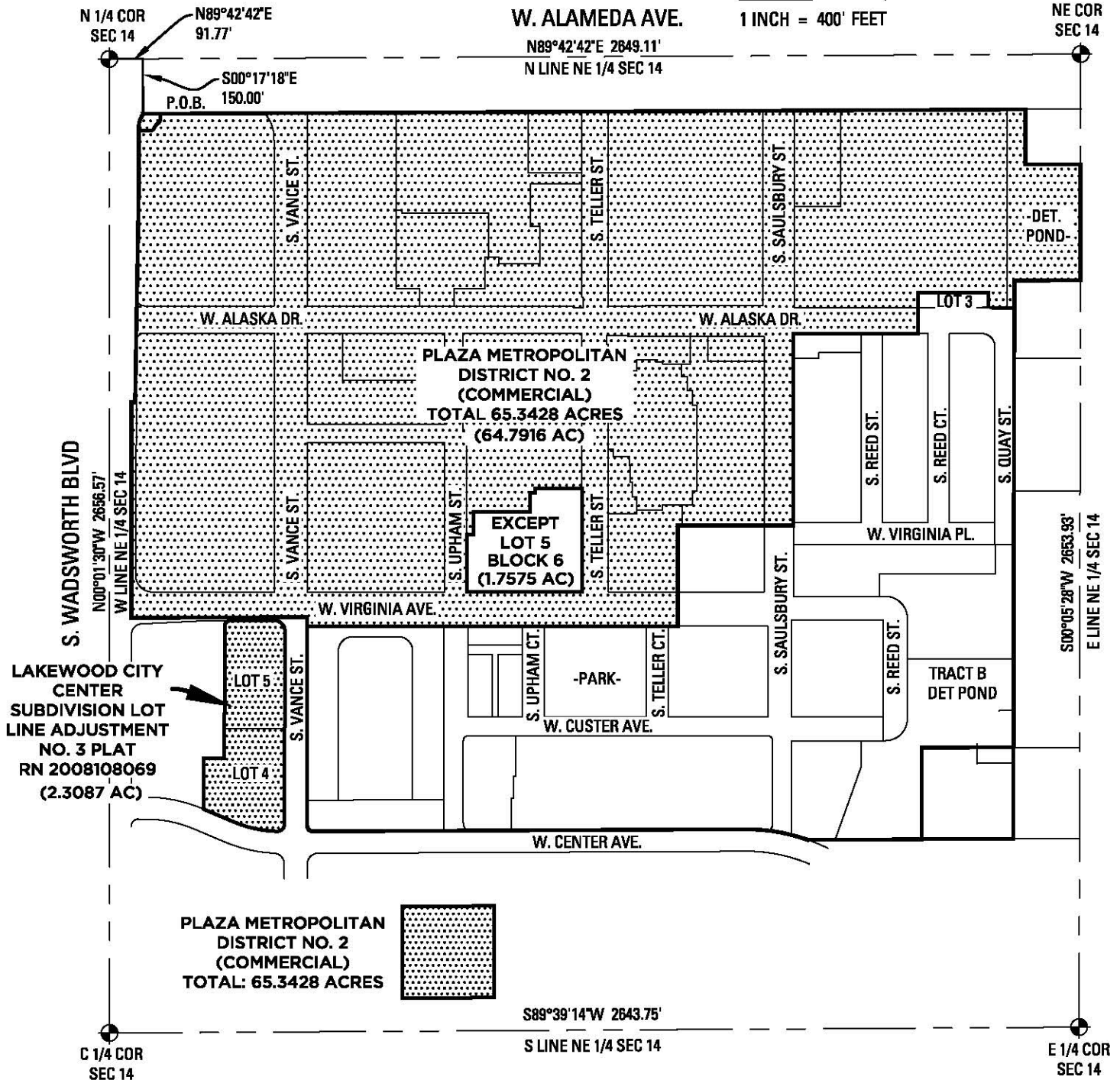
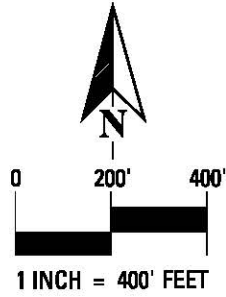


TITLE:
THE PLAZA METRO DISTRICT NO. 1 (SERVICE DISTRICT)

LOCATION:
 BELMAR AREA
 NE 1/4 SECTION 14 T4S, R69W, OF THE 6TH P.M.,
 CITY OF LAKEWOOD, COUNTY OF JEFFERSON, STATE OF COLORADO

SCALE: 1"=400'	DATE: 02.03.20	PROJECT NO: 0017-2011	AREA: 1.4851 AC	PATH: J:\0017\2011\SURVEY\DISTRICT\PLAZA MD DIST 1 SERVICE.DWG
--------------------------	--------------------------	---------------------------------	---------------------------	--

EXHIBIT SHEET 3 OF 3



LAKWOOD CITY CENTER SUBDIVISION LOT LINE ADJUSTMENT NO. 3 PLAT RN 2008108069 (2.3087 AC)

PLAZA METROPOLITAN DISTRICT NO. 2 (COMMERCIAL) TOTAL: 65.3428 ACRES

S89°39'14"W 2643.75'
S LINE NE 1/4 SEC 14



TITLE:
THE PLAZA METRO DISTRICT NO. 2 (COMMERCIAL DISTRICT)

LOCATION:
BELMAR AREA
NE 1/4 SECTION 14 T4S, R69W, OF THE 6TH P.M.,
CITY OF LAKEWOOD, COUNTY OF JEFFERSON, STATE OF COLORADO

SCALE: 1"=400'	DATE: 02.02.21	PROJECT NO: 0017-2011	AREA: 65.3428 AC	PATH: J:\0017\2011\SURVEY\DISTRICT\PLAZA MD DIST 2 COMMERCIAL.DWG
--------------------------	--------------------------	---------------------------------	----------------------------	---